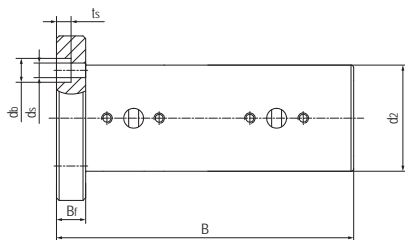
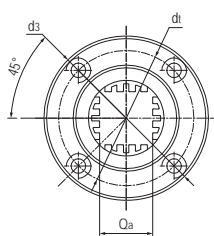


LIN-12QRFL 加长型圆法兰直线轴承 Linear bearings with round flange, Long design



- 封闭式圆法兰加长设计
 - 装配2个LIN-12Q滑动膜
 - 阳极氧化铝合金适配器
 - 承受扭矩高达 10 Nm
 - 免维护、低噪音
 - 适用于污垢或灰尘环境
 - 使用温度 -50℃/+90℃
- Closed design with round flange
 - Assembled 2pcs liners LIN-12Q
 - Anodized aluminum adapter
 - Torque absorption up to 10 Nm
 - Maintenance-free and low noise
 - Resistance to dirt and dust
 - Operation temperature -50℃/+90℃

标准规格 Standard specifications



产品编码 Part No.:

LIN-12QRFL-20

- 内孔尺寸 Inner dimension
- 圆法兰加长型保持器 Round flange aluminum adapter (long design)
- LIN-12Q 标准滑动膜 Standard liners LIN-12Q

轴 Shaft: h6-h9

产品编码 Part No.	d_2 [mm]	B_f [mm]	Q_a [mm]	d_3 [mm]	d_1 [mm]	B [mm]	d_s [mm]	d_b [mm]	t_s [mm]
LIN-12QRFL-20	40	11	20	62	51	112	5.5	9	5.5

产品编码 Part No.	内孔尺寸 Inner dimension [mm]	F max. [N] 最大动载荷 Dynamic Load P=5MPa	F max. [N] 最大静载荷 Static Load P=35MPa	最大扭矩 Max. torque [Nm]	重量 Weight [g]
LIN-12QRFL-20	20	3200	23000	10	231